



University of Phoenix®
College of Education

**Master of Arts in Education/
 Curriculum and Instruction**



Improve the quality of classroom instruction.

Call **866.992.6545** to speak with your Enrollment Representative.

You're seeking the best strategies to enhance your student learning. Our **Master of Arts in Education/Curriculum and Instruction (MAEd/CI)** degree program can help you find those strategies, and excel as an instructional coordinator. Become a leader at your school with a degree program that aligns with national standards and prepares you to navigate the shifting landscape of education.

Developed by leading educators, the program prepares P-12 teachers to enhance their curriculum, instruction and leadership repertoire by expanding their knowledge of assessment, instructional strategies, integration of technology, professional development, data-driven decision-making, and mentoring and coaching. Graduates will be able to effectively collaborate with all stakeholders and serve their students, colleagues and communities as ethical leaders committed to excellence.

Study a solid core curriculum:

- Assessment models
- Instructional strategies
- Technology integration
- Professional development
- Data-driven decision-making
- Mentoring and coaching
- Ethical practices

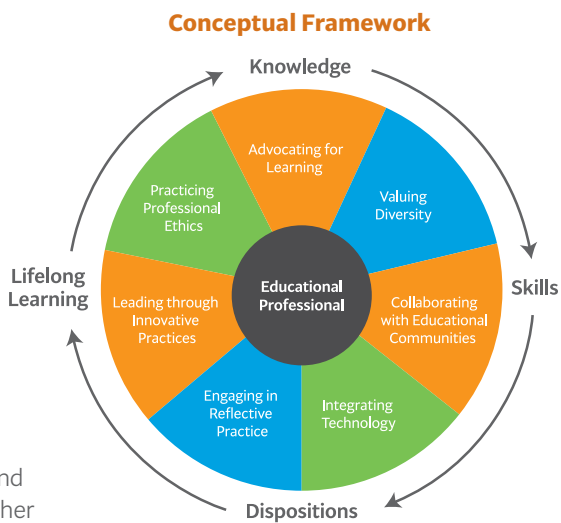
Curriculum aligned with:

- Interstate New Teacher Assessment and Support Consortium Model Core Teacher (InTASC) standards
- International Society for Technology in Education (ISTESM) Teacher Standards

Our degree programs offer the outstanding support of our dedicated staff who will guide you with financial aid and program completion.

The Master of Arts in Education/Curriculum and Instruction is a graduate degree program intended to provide educators with advanced knowledge and skills in curriculum and instruction. The MAED/CI does not prepare students for any type of professional certification or state licensure as a teacher. The program is only intended as an advanced degree.

See reverse for more information.



Benefits of being a Phoenix:

- Learn from instructors with an average of 19 years in P–12 education, including superintendents, principals and teachers.
- Connect with an alumni network of 89,000 College of Education graduates.
- Develop and showcase samples of your lesson plans and projects.
- Access educational toolkits, tutorials, lesson plans and other resources for the educational professional in the College of Education Resources.

The Master of Arts in Education/Curriculum and Instruction requires a minimum of 35 credits, which may come from a combination of required and elective courses.

For a complete listing of programs, courses, descriptions and prerequisites, visit phoenix.edu/education/info or call **866.992.6545** to speak with your Enrollment Representative.

Contact: Penny Roberts
Regional Education Development Specialist
714.642.5855 or penny.roberts@phoenix.edu

In addition to core coursework, required courses are:

COM 516

Professional Communications

CUR 505

Social and Global Perspectives of Teacher Leadership

CUR 506

Theories and Best Practices of Curriculum and Instruction

CUR 515

Critical-Thinking and Innovative Skills

CUR 520

Advocating for Learning

CUR 525

Ethical Issues in Education

CUR 530

Assessment and Evaluation Models

CUR 535

Research for Improved Practice

CUR 540

Methods of Coaching in the Instructional Setting

CUR 545

Using Technology for Teaching and Learning

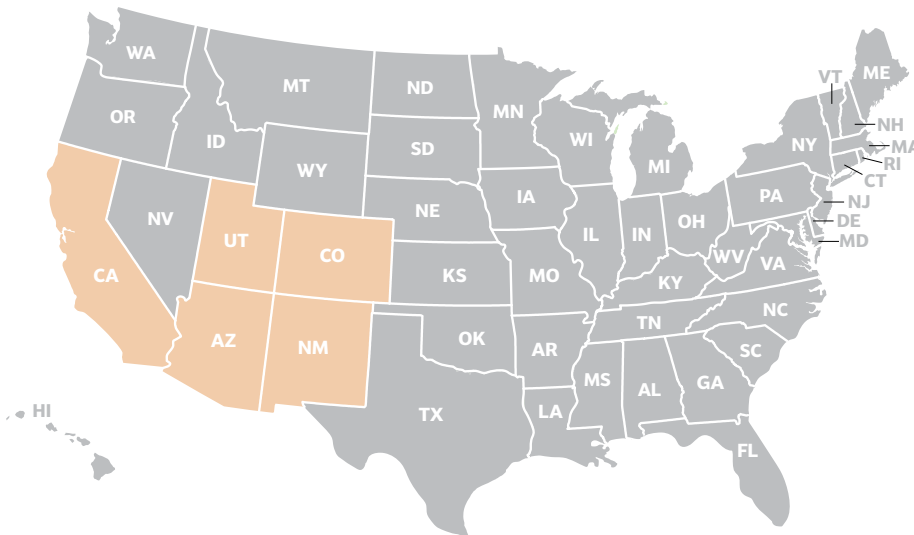
CUR 550

Engaging in Communities of Practice

CUR 555

Professional Learning for Continuous Improvement

MAEd/CI program offered on ground campuses.



For more information about our on-time completion rates, the median debt of students who completed the program, and other important information, please visit our website at <http://www.phoenix.edu/programs/degree-programs/education/masters/maed-ci.html>.

ISTE is a servicemark of International Society for Technology in Education, Inc.

While widely available, not all programs are available in all locations or in both online and on-campus formats. Please check with a University Enrollment Representative.

The University's Central Administration is located at 1625 W. Fountainhead Pkwy., Tempe, AZ 85282.

© 2015 University of Phoenix, Inc. All rights reserved. | COE-4353